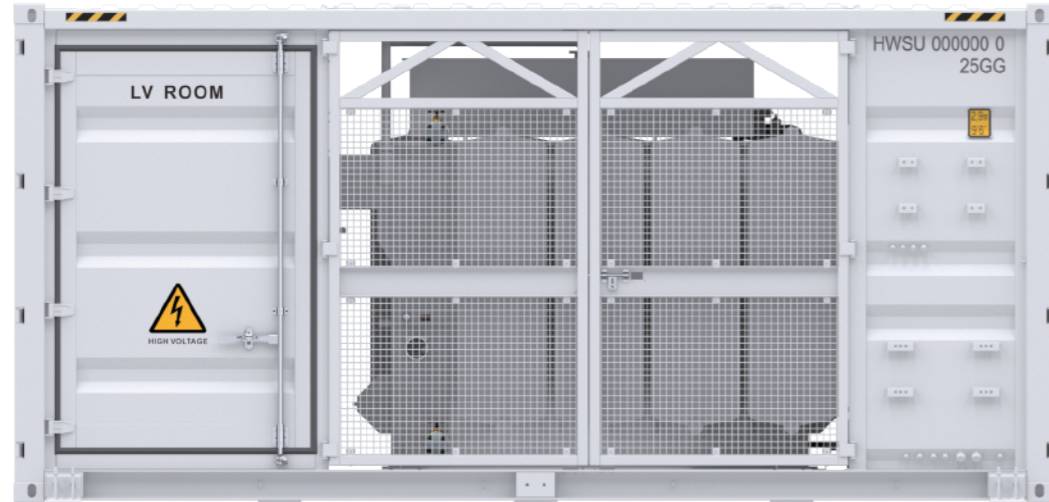


JUPITER-3000K-H1-GF Smart Transformer Station

For EUROPE



Simple

Prefabricated and pre-tested,
no internal cabling needed onsite
Compact 20' HC container design for easy transportation



Efficient

High efficiency transformer for higher yields
Lower self-consumption for higher yields



Smart

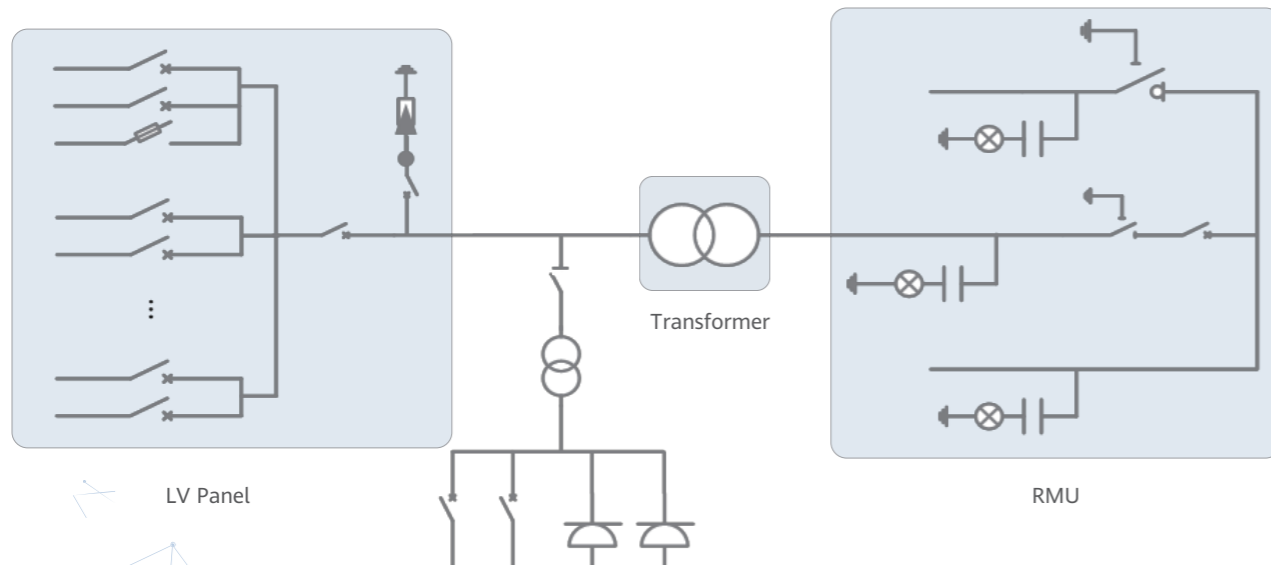
Real-time detection of transformer,
LV panel and RMU high precision sensor
of LV electricity parameters
Remote control of ACB and MV circuit breaker



Reliable

Robust design against harsh environments optimal cooling
Design for high availability and easy O&M
Comprehensive tests from components, device to solution

Schematic Diagram



Technical Specifications

Input	
Available Inverters / PCS	LUNA2000-200KTL-H1
Maximum LV AC Inputs	37
AC Power	3,300 kVA @40°C/ 3,025 kVA @50°C ¹
Rated Input Voltage	800 V
LV Panel Segregation	Form 2b
LV Main Switches	ACB (2,900 A / 800 V / 3P, 1 x 1 pcs)
LV Main Switches for LUNA2000-200KTL-H1	MCCB (250 A / 800 V / 3P, 2 x 18 pcs)
LV Main Switches for DTS-200K-D0	MCCB (250 A / 800 V / 3P, 1 x 1 pcs)
Output	
Rated Output Voltage	30 kV, 33 kV, 35 kV ²
Frequency	50 Hz
Transformer Type	Oil-immersed, Conservator Type
Transformer Cooling Type	ONAN
Transformer Tappings	±2 x 2.5%
Transformer Oil Type	Mineral Oil (PCB Free)
Transformer Vector Group	Dy11
Transformer Min. Peak Efficiency Index	Tier 1 or Tier 2 In Accordance with EN 50588-1
RMU Type	SF ₆ Gas Insulated
RMU Transformer Protection Unit	MV Vacuum Circuit Breaker Unit
RMU Cable Incoming / Outgoing Unit	Direct Cable Unit or Cable Load Break Switch Unit
Auxiliary Transformer	Dry Type Transformer, 5 kVA, Single-phase, li0
Output Voltage of Auxiliary Transformer	230 /127Vac
Protection	
Transformer Monitoring & Protection	Oil Level, Oil Temperature, Oil Pressure and Buchholz
Protection Degree of MV & LV Room	IP 54
MV Internal Arcing Fault Classification of STS	IAC AFLR 20 kA 1s
MV Arc Releasing	MV Upward Arc Releasing for Higher Safety
MV Relay Protection	50/51, 50N/51N
LV Overvoltage Protection	Type I+II
Anti-corrosion Protection	C5
Features	
2 kVA UPS	Optional ³
MV Surge Arrester for Transformer	Optional ³
General	
Dimensions (W x H x D)	6,058 x 2,896 x 2,438 mm (20' HC Container)
Weight	< 23 t
Operating Temperature Range	-25°C~ 60°C ⁴ (-13°F ~ 140°F)
Relative Humidity	0% ~ 95%
Max. Operating Altitude	1,000 m ⁵
MV-LV AC Connections	Prewired and Pretested, No Internal Cabling Onsite
LV & MV Room Cooling	Smart Cooling without Air-across for Higher Availability
Communication	Modbus TCP, Preconfigured with SmartACU
Applicable Standards	IEC 62271-202, EN 50588-1, IEC 60076, IEC 62271-200, IEC 61439-1

¹ -More detailed AC power of STS, please refer to the de-rating curve.

² -Rated output voltage from 10 kV to 35 kV, more available upon request

³ -Extra expense needed for optional features which standard product doesn't contain, more options upon request.

⁴ -When ambient temperature ≥55°C, awning shall be equipped for STS on site by customer.

⁵ -For higher operating altitude, please consult with Huawei.