

# NetEco1000S



## Smart

- Easy data accesses on mobile devices
- Auto faults alarming and reports issuing
- Smart I-V Curve Diagnosis supported

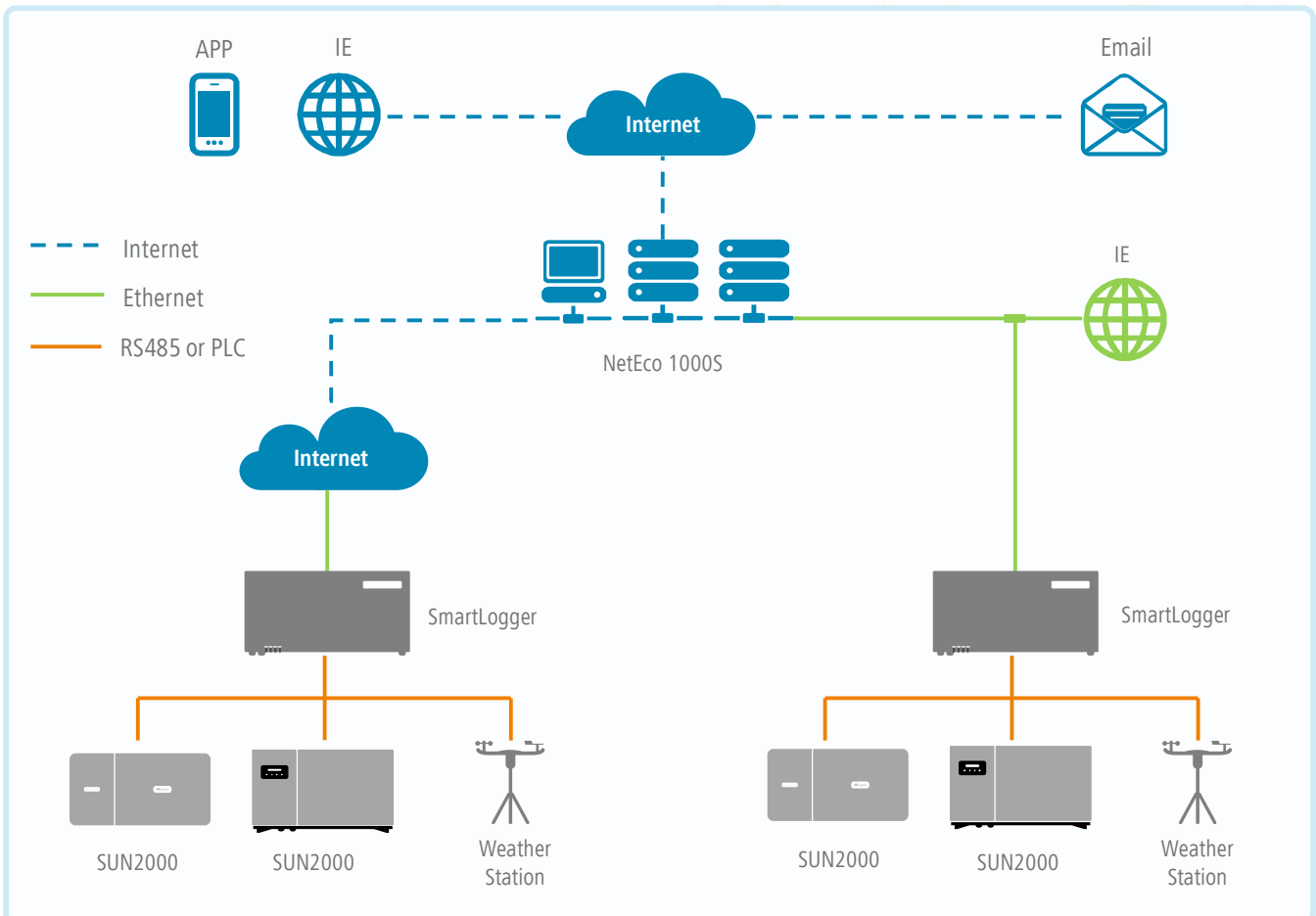
## Simple

- One-click installation on PC
- Fault alarms via SMS and E-mail

## Reliable

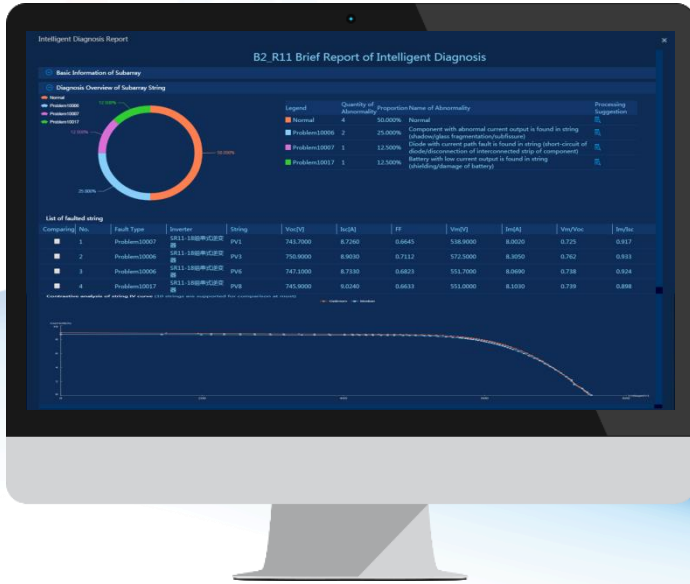
- Hierarchical management
- Up to 25 years data storage

## Network Structure



The text and figures reflect the current technical state at the time of printing. Subject to technical changes. Errors and omissions excepted. Huawei assumes no liability for mistakes or printing errors. For more information, please visit solar.huawei.com. Version No.01-(201809)

# Smart I-V Curve Diagnosis



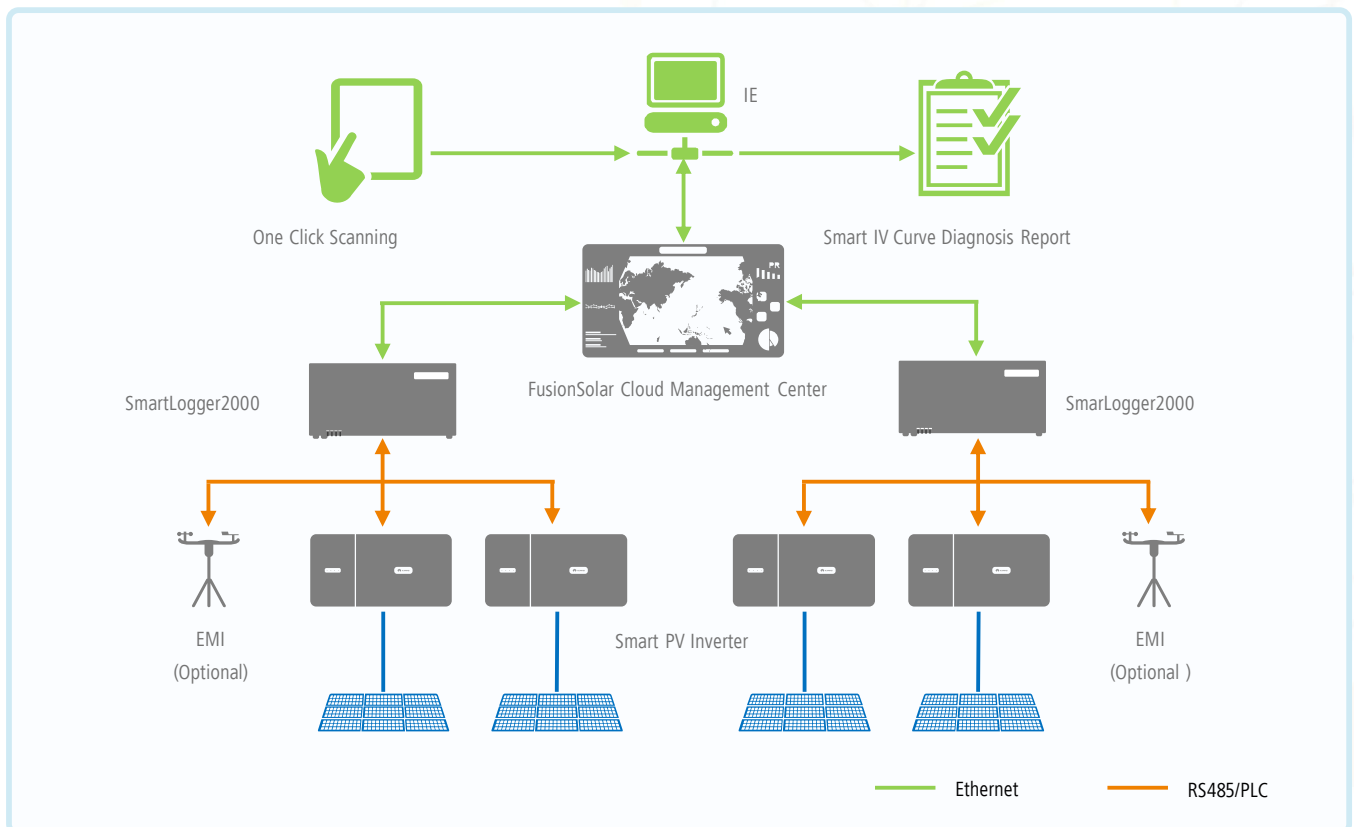
**Smart I-V Curve Diagnosis** is based on string IV curve pattern analysis with advanced diagnosis algorithm, conducting PV plant complete string IV curve analysis. The online scanning and analysis can assist achieving higher O&M efficiency, proactive maintenance and lower operation cost.

## Smart

- Supports plant-level, array-level or inverter-level IV curve analysis and diagnosis
- Identifies different module faults with automatic report generation

## Efficient

- One click scanning without onsite experts or equipment
- Online IV curve scanning on entire strings
- Automatic report generation within 10~15min

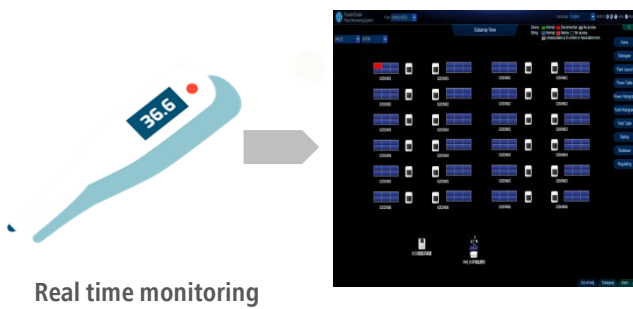


The text and figures reflect the current technical state at the time of printing. Subject to technical changes. Errors and omissions excepted. Huawei assumes no liability for mistakes or printing errors. For more information, please visit solar.huawei.com. Version No.01-(201809)

	Technical Specification	Smart I-V Curve Diagnosis
Configuration	Smart PV Inverter	SUN2000-36KTL/42KTL or New Versions
	Data Logger	SmartLogger2000, SmartLogger1000
	Management System	FusionSolar Cloud Management Center, NetEco1000s
Performance	Scanning Time	< 1s
	Sampling Points per I-V Curve	128
	Voltage Accuracy	0.5%rdg. + 1dgt. ( rdg.>5, dgt.=0.3 )
	Current Accuracy	0.5%rdg. + 2dgt. ( rdg.>0.3, dgt.=0.006 )

TÜVRheinland® Smart I-V Curve Diagnosis is TUV Verified

## String-level Management



## Smart I-V Curve Diagnosis



## String I-V Curve Comparison

