


GO SOLAR WITH HUAWEI


FusionSolar Commercial Smart PV Solution





Smart Power Sensor

Manage power from and to the grid



Smartlogger1000A

Up to 80 devices management



FusionSolar Portal & APP

Manage energy generation and consumption anytime and anywhere

Smart PV Inverter


SUN2000-12/15/17/20KTL-M0

Convert solar energy into electricity to power your building



Smart Dongle-4G/WLAN-FE

Connect your solar system to the cloud



Get FusionSolar with peace in mind

Excellent product quality with extendable warranty to protect your investment



Where to buy

Please put your information / namecard here

Contact Us

-  Huawei FusionSolar
-  @HuaweiFusionSolar
-  Huawei FusionSolar
-  @HuaweiSolar

Know Huawei with 6 Numbers



170+

Countries & regions with
Huawei products and services



188,000

Huawei employees worldwide



61

In Fortune 500 Companies 2018



5th

in Global Corporate R&D
Investment



No.1

In global inverter shipment
from 2015 to 2018



90GW+

Huawei inverters deployed
worldwide

Faster Installation & Commissioning for Better Solar Experience



<25kg

Extreme low weight for one person easy
installation. Advanced digital control
algorithm enables smaller magnetics and
cooling components



4-Step Commissioning

Faster system commissioning via 4-step intuitive FusionSolar app quick setting
Auto detection & registration of affiliated devices to inverters.

Plug & Play 4G Dongle Connection

Inverter USB interface for 4G dongle plug &
play connection.

Independent and stable 4G communication
adapts to inverter installation in public area
where communication signal is normally
restricted.



Ultimate Safety for Life & Property with Arc Fault Circuit Interrupter (AFCI)

Electric arcing is threatening the safety of
PV systems & underlying buildings

What is it?

- Electrical breakdown of air that produces an prolonged electrical discharge.

What is the harm?



Can reach temperature
of over 3000°C and be
a potential of fire risk



Pose significant risk to
human under high
DC voltage and current



Where is it?

- Unreliable soldered joints, broken PV cables, loosen PV connectors, etc.

AI Powered Arc Fault Circuit Interrupter (AFCI) to
proactively mitigate fire risk

Speedy

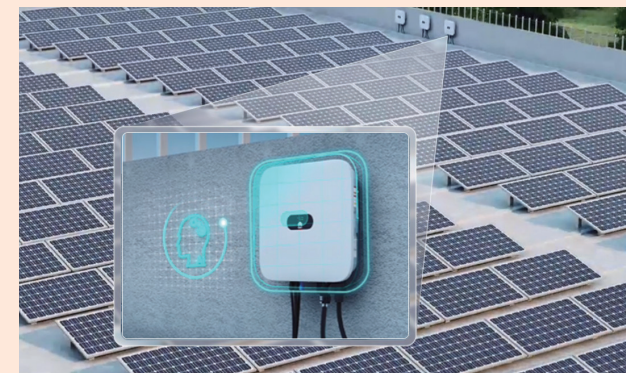
Automatic shutdown
in 2 sec meeting
US UL1699B

Accurate

Detect and confirm
PV arcing with less
false alarms

AI-powered

Self-learn new
types of arcing
for future higher safety



Higher System Reliability to Secure Your Solar Investment

No Quick-wear Parts, Inverter Failure Rate < 0.5%



Inverter failure rate < 0.5%

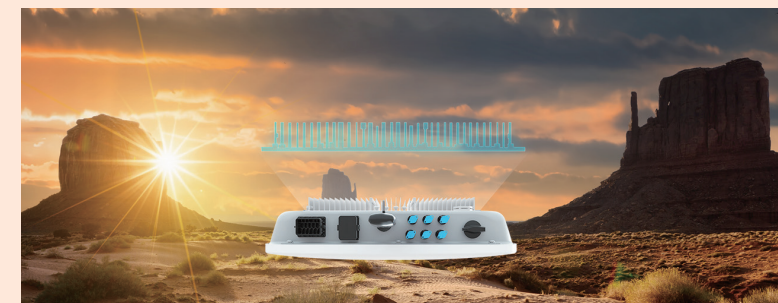
Station Phase II,
200 units, 963 running days
Failure Rate:
0.189%

Station Phase III,
4939 units, 583 running days
Failure Rate:
0.252%

Station Phase IV,
1790 units, 207 running days
Failure Rate:
0.39%



Mature Natural Cooling Verified by Telecom
& Solar Application for Stable Operation



30+

Inherits 30+ years Huawei
telecom products natural
cooling experience

90+

Over 90GWs of solar inverters
products stable operating
even under crucial environment



Thickness varied heat
sink guarantees higher
thermal efficiency