

How to connect on the SmartLogger1000&2000



Huawei Technologies Co. Ltd.

Version	Created by	Date	Remarks
02	Huawei e84081311	25.10.2018	Initial version created

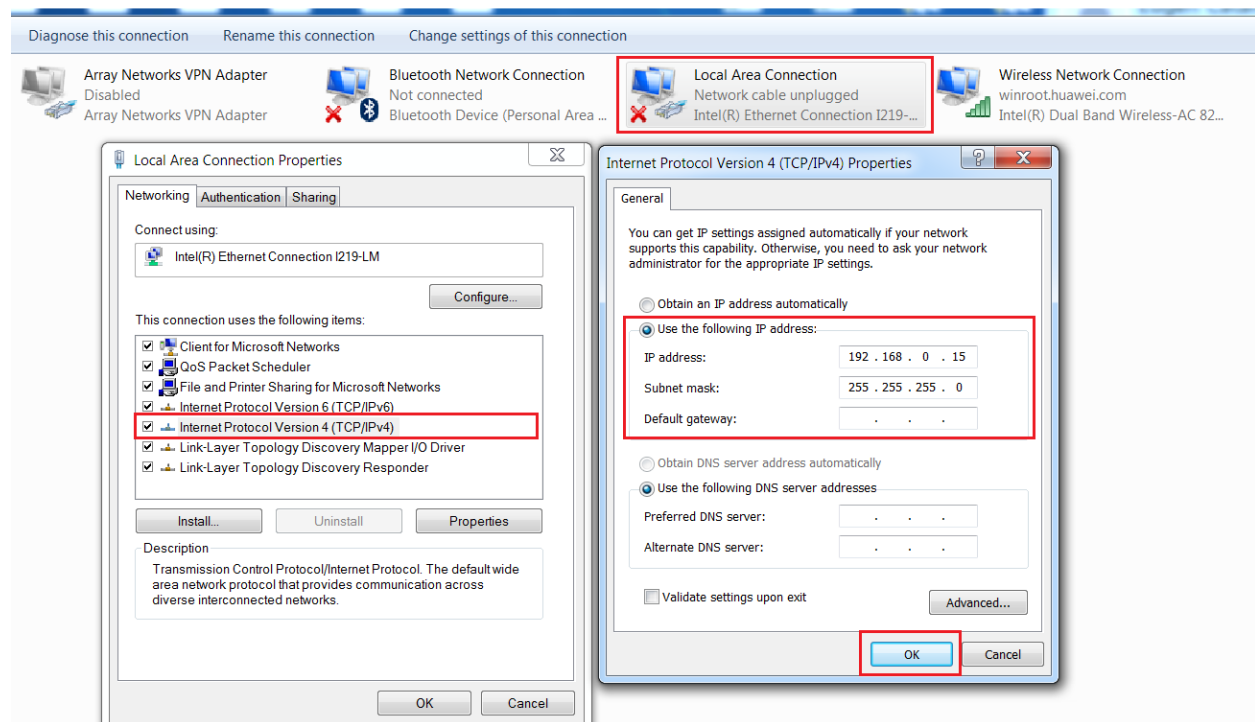
The information in this document may contain predictive statements including, without limitation, statements regarding the future financial and operating results, future product portfolio, new technology, etc. There are a number of factors that could cause actual results and developments to differ materially from those expressed or implied in the predictive statements. Therefore, such information is provided for reference purpose only and constitutes neither an offer nor an acceptance. Huawei may change the information at any time without notice.

This document describe how to connect on Smartlogger1000&2000 with a PC. The default IP of the Smartlogger1000&2000 is 192.168.0.10 and the password “Changeme”.

Procedure:

Step 1 Set your computer local area connection with an IP in the same range with the Smartlogger

Go to Windows start->Control Panel->Network and Internet->Network and Sharing Center->Change adapter settings->Double click on Local Area Connection->Double click on Internet Protocol Version 4 and set the IP like below:



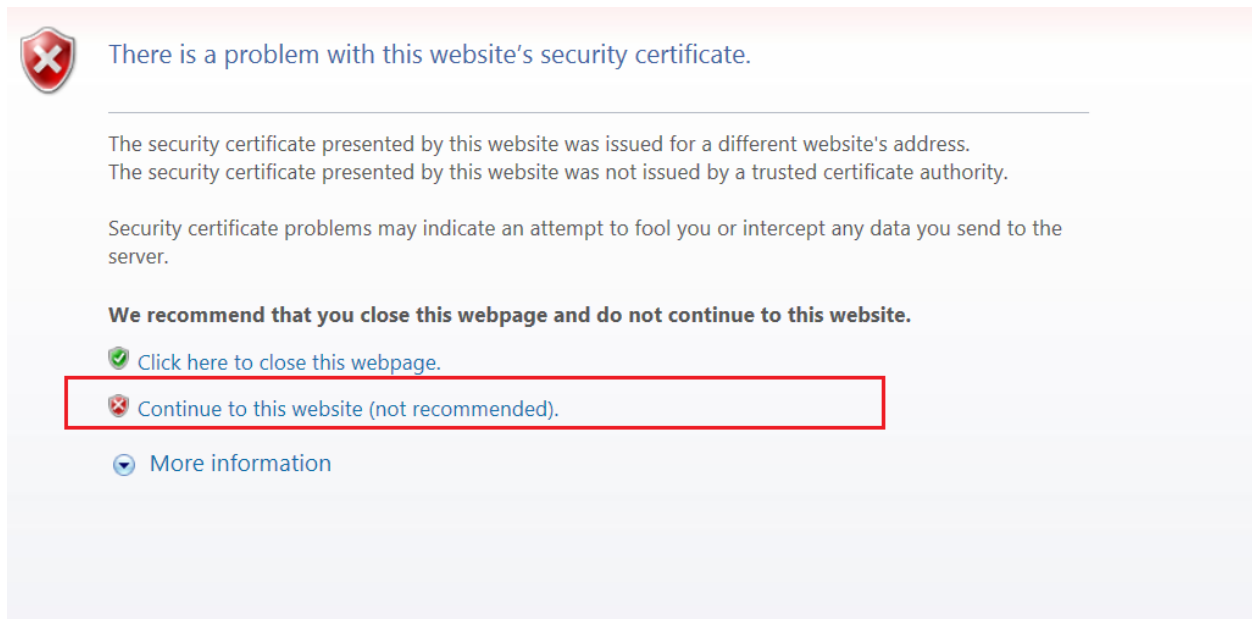
Step 2 Connect to the Smartlogger’s Web UI interface

Connect with a LAN cable the Ethernet ports of the Smartlogger and PC. Open a browser (Chrome 50 or IE11) and type the next link: <https://192.168.0.10> Chose a user name “Advanced User” and type in the password. The default

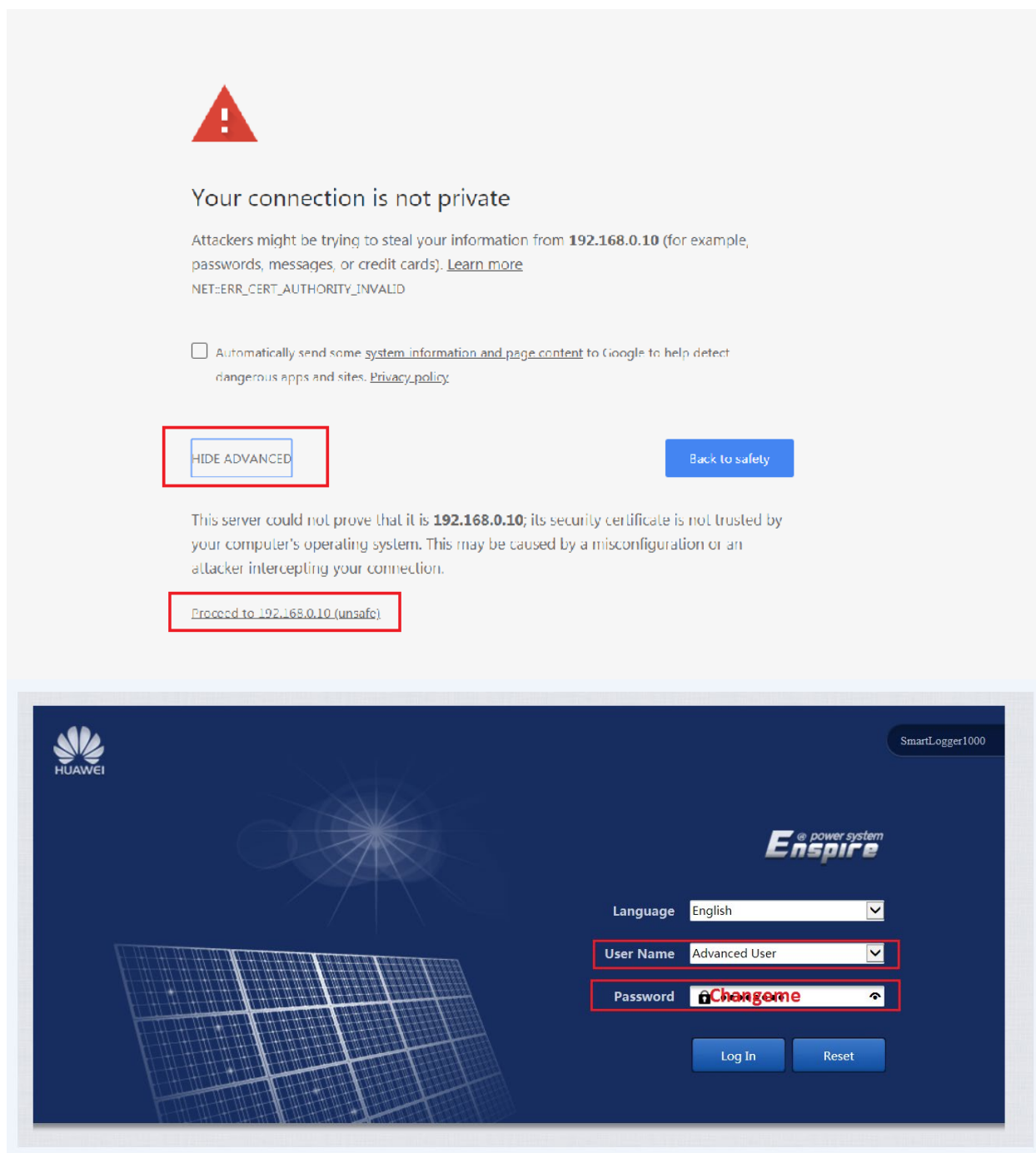
password for all users is “Changeme”.

If the message appear before connect like below: for IE select “Continue to this website (not recommended)” and for Chrome select “Hide advanced” and Proceed to 192.168.0.10(unsafe).

Internet Explorer:



Chrome:



If you don't know the IP of the Smartlogger follow the below instruction to find.

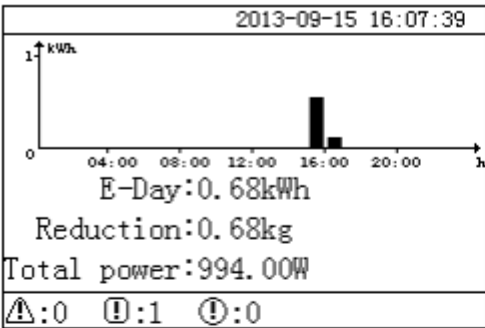

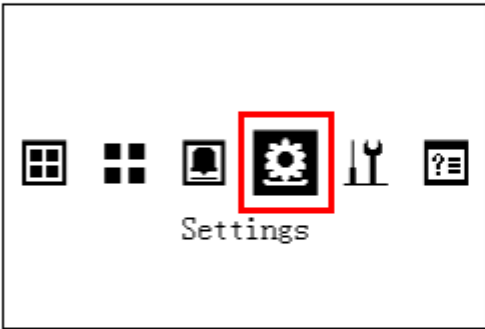


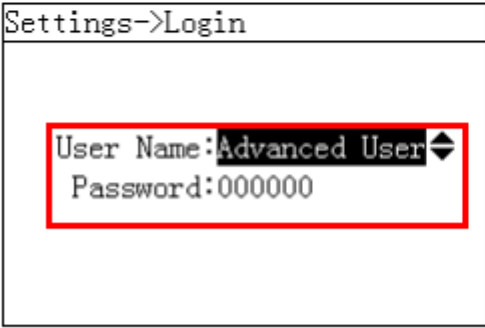

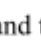

STEP 3 Find the Smartlogger1000&2000 IP.

The default IP of a Samrtlogger1000&2000 is 192.169.0.10 and if you don't know the IP follow these steps and you can find the IP Address.







For the Smartlogger1000 you can login on LCD screen like advanced user→settings→communication parameters→Ethernet.

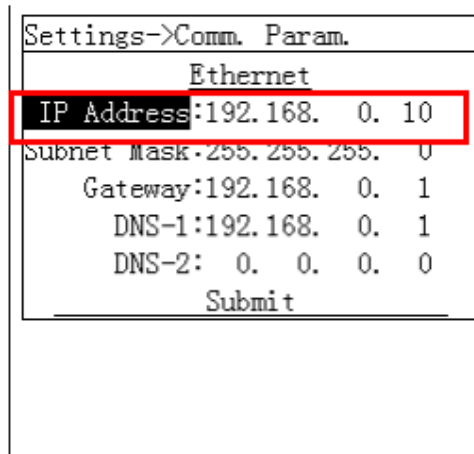
For the Smartlogger2000 you can connect with SUN2000APP as **Advanced user**, password: **00000a** →**More**→**Settings** →**Comm. Param**→ **IP Address**

Smartlogger1000:

LCD	Operation Procedure
	<p>1. On the default page, press  to enter the main menu.</p>
	<p>2. Choose  and press .</p>
<p>Settings->Login</p> 	<p>3. Set User name and Password by pressing  or , and then press .</p> <p>NOTE</p> <ul style="list-style-type: none"> Because of the limited permission, select User name as Advanced User. The initial password for Advanced User is 000001. If you forgot the password, contact Huawei technical support for a dynamic password that is effective only on that current day. Change the password after login. After passing the permission validation, the system keeps the authentication information for 30 seconds. If you exit from the Settings page and log in again within 30 seconds, no authentication is required.

The initial password for Advanced User is 000001

LCD	Operation Procedure
<div>Settings</div> <div>User Param.</div> <div>User Password</div> <div>Comm. Param.</div> <div>Restore Defaults</div> <p>Here use the pages displayed when you log in to the SmartLogger as Advanced User.</p>	<p>4. Select Comm. Param. and press .</p> <ul style="list-style-type: none"> Perform step 5 and step 6 to set the parameters for the RS485. Perform step 7 and step 8 to set the parameters for the Ethernet. Perform step 9 and step 10 to set the parameters for the NetEco. Perform step 11 and step 12 to set the parameters for the IEC103.
<div>Settings->Comm. Param.</div> <div>RS485-1</div> <div>RS485-2</div> <div>RS485-3</div> <div>Ethernet</div> <div>NetEco</div> <div>IEC103</div>	<p>5. Select an RS485 port by pressing  or  and then press .</p> <p>There are three RS485 ports: RS485-1, RS485-2, and RS485-3. The corresponding port for RS485-1 is COM1; RS485-2 is COM2; RS485-3 is COM3.</p>
<div>Settings->Comm. Param.</div> <div>RS485-1</div> <div>RS485-2</div> <div>RS485-3</div> <div>Ethernet</div> <div>NetEco</div> <div>IEC103</div>	<p>7. Press , select Ethernet, and press .</p>



Settings->Comm. Param.

Ethernet

IP Address: 192.168. 0. 10

Subnet Mask: 255. 255. 255. 0

Gateway: 192.168. 0. 1

DNS-1: 192.168. 0. 1

DNS-2: 0. 0. 0. 0

Submit

8. Set IP address, Subnet Mask, Gateway, and DNS, and press ↵.

NOTICE

Take the following precautions for setting Ethernet parameters when the SmartLogger connects to the Internet through a router:

- Set the gateway address to the IP address of the router.
- Ensure that the IP address of the SmartLogger is in the same network segment as the gateway address.
- Set the domain name server (DNS) address to the IP address of the router or obtain the DNS address from the network provider.

Smartlogger2000:

For Smartlogger 2000 you can find out the IP by connecting to the Smartlogger via the SUN2000 App, using the Bluetooth interface.

Connect as **Advanced user** (password: 00000a) → **More** → **Settings** → **Comm. Param** → **IP Address**

