

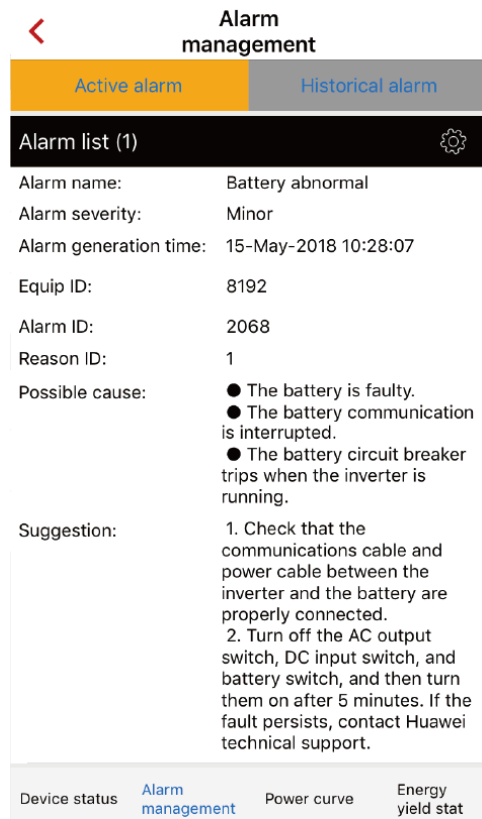
Battery switch trip

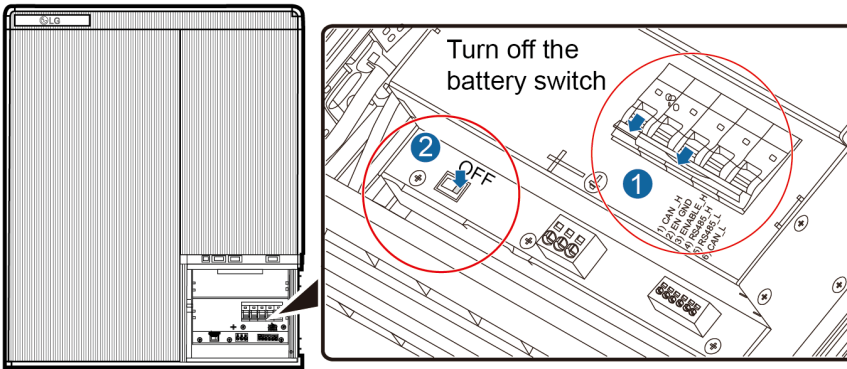


Huawei Technologies Co. Ltd.

Version	Created by	Date	Remarks
01	Huawei 84081311	10.01.2019	SUN2000L

The information in this document may contain predictive statements including, without limitation, statements regarding the future financial and operating results, future product portfolio, new technology, etc. There are a number of factors that could cause actual results and developments to differ materially from those expressed or implied in the predictive statements. Therefore, such information is provided for reference purpose only and constitutes neither an offer nor an acceptance. Huawei may change the information at any time without notice

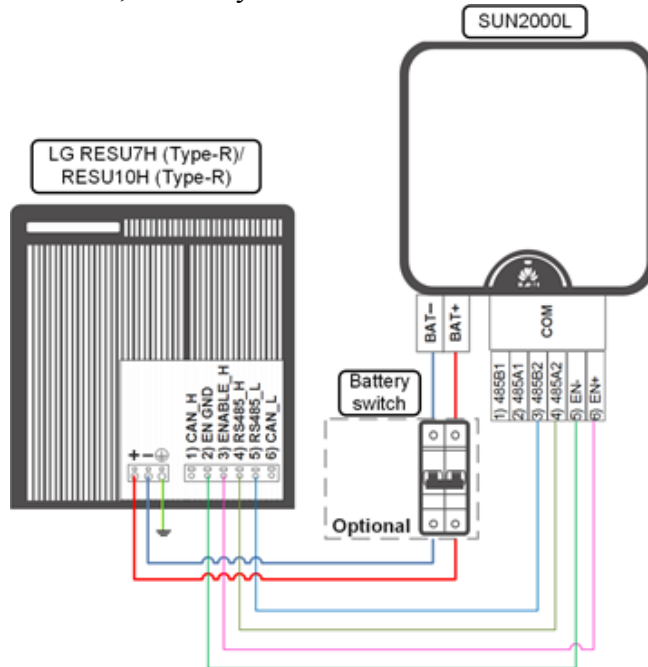




Step 2 Turn off the AC switch and then the DC switch of the SUN2000L.

Step 3 Wait for 5 minutes. After the system is completely powered off, check whether the positive and negative battery cables are reversely connected.

- If so, contact your dealer for reconnection.



Step 4 Check whether too many PV modules are configured and whether the maximum open-circuit voltage of PV modules exceeds 495 V DC.

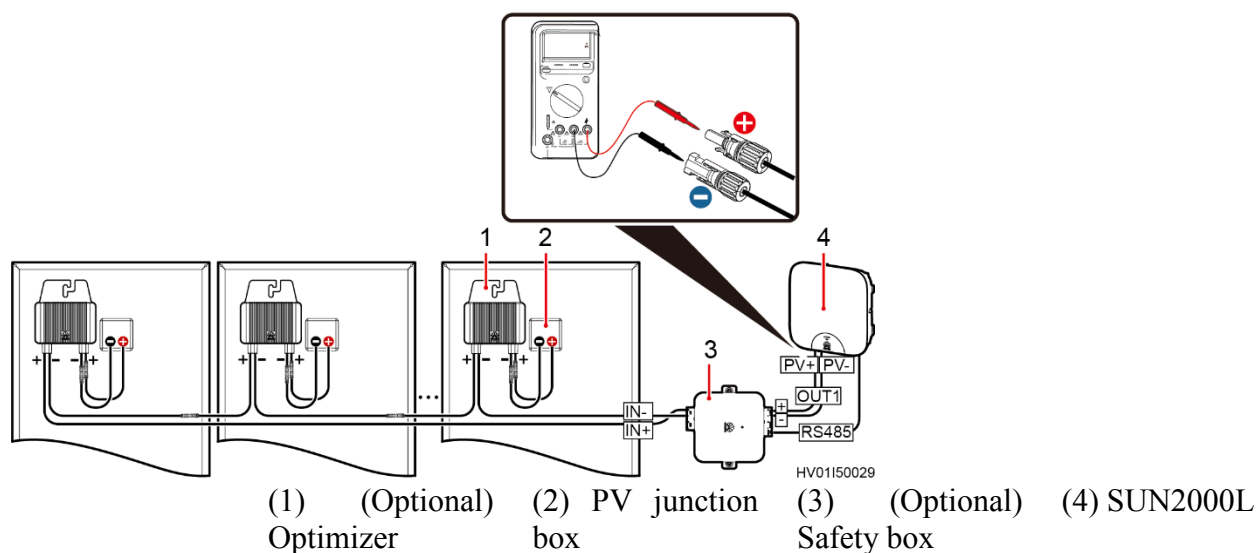
Perform the following steps:

1. Remove the PV wiring terminals connected to the SUN2000L.
2. Check that the measurement range of the multi-meter is greater than 600 V DC. Use a millimeter to measure the voltage of the PV wiring terminals.

If the maximum open-circuit voltage exceeds 495 V DC, contact the installation contractor.

Otherwise, perform [Step 5](#).

Measuring the maximum open-circuit voltage:



Step 5 If the fault persists after completing the preceding steps, turn off the battery switch and Auxiliary Power ON/OFF switch, and contact LG after-sales service.
LG after-sales service:

Area	Contact Info	
HQ (KOR)/Other regions	Address	29, Gwahaksaneop-3-ro, Oksan-myeon, Heungdeok-gu, Cheongju-si, Chungcheongbuk-do, South Korea
	Email	essservice@lgchem.com
US	Address	1064 Chicago Rd, Troy, MI 48083, USA
	Telephone	+1 888 375 8044
	Email	CSNorthAmericaESS@lgchem.com
Europe	Address	Otto-Volger Str. 7C 65843 Sulzbach (Taunus), Germany
	Telephone	+49 6196 5719 660
	Email	techcentereu@lgchem.com
Australia	Address	Unit 12, 25-37 Dunlop Road, Mulgrave, 3170, Victoria, Australia
	Telephone	+61 1300 178 064
	Email	essserviceau@lgchem.com