

Export Logs file using USB key



Huawei Technologies Co. Ltd.

Version	Created by	Date	Remarks
03	Huawei e84081311	28.11.2018	Initial version created

The information in this document may contain predictive statements including, without limitation, statements regarding the future financial and operating results, future product portfolio, new technology, etc. There are a number of factors that could cause actual results and developments to differ materially from those expressed or implied in the predictive statements. Therefore, such information is provided for reference purpose only and constitutes neither an offer nor an acceptance. Huawei may change the information at any time without notice.

This document explains how to download the logs file from Huawei inverters using a USB key for following inverter models: 33KTL-A, 36KTL, 42KTL, 55KTL, 60KTL and 100KTL

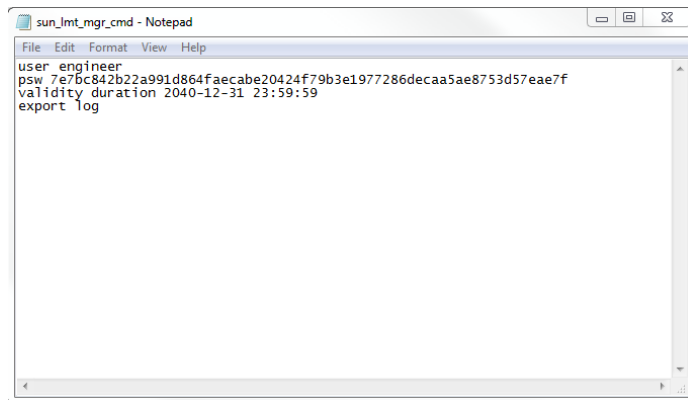
1. Create the boot script file:

- Create .txt file in your laptop.
- Copy the following text inside it

```
user engineer  
psw 7e7bc842b22a991d864faecabe20424f79b3e1977286decaa5ae8753d57eae7f  
validity duration 2040-12-31 23:59:59  
export log
```

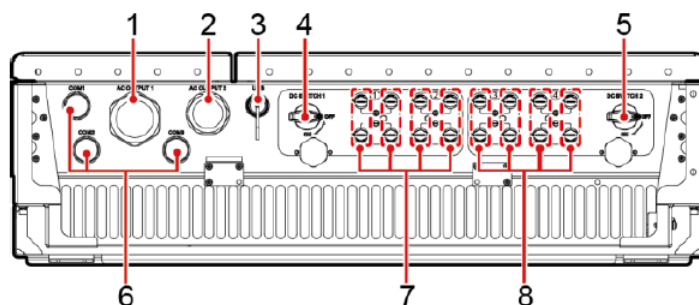
2. Save this file inside an empty USB key and name it *sun_lmt_mgr_cmd.emap*

The following USB keys are recommended: Kingston, Netac or SanDisk



3. Connect USB flash drive to USB port.


The system automatically identifies the USB flash drive and executes all commands specified in the boot script file. View the LED indicator to determine the operating status.



IS03WC0003

- (1) Waterproof cable connector (AC OUTPUT 1)
- (2) Waterproof cable connectors (AC OUTPUT 2)
- (3) USB port (USB)
- (4) DC switch 1 (DC SWITCH 1)
- (5) DC switch 2 (DC SWITCH 2)
- (6) Waterproof cable connectors (COM1/COM2/COM3)
- (7) DC input terminal (controlled by DC SWITCH 1)
- (8) DC input terminal (controlled by DC SWITCH 2)

4. Check the LED indicators to see the progress of the operation

Indicator	Status	Meaning
	Off	There is no operation with a USB flash drive.
	Blinking green slowly (on for 1s and then off for 1s)	There is an operation with a USB flash drive.
	Blinking green fast (on for 0.125s and off for 0.125s)	An operation with a USB flash drive has failed.
	Steady green	An operation with a USB flash drive is successful.

