

Export logs file on FusionSolar



Huawei Technologies Co. Ltd.

Version	Created by	Date	Remarks
01	Huawei e84081311	27.02.2019	Log file

The information in this document may contain predictive statements including, without limitation, statements regarding the future financial and operating results, future product portfolio, new technology, etc. There are a number of factors that could cause actual results and developments to differ materially from those expressed or implied in the predictive statements. Therefore, such information is provided for reference purpose only and constitutes neither an offer nor an acceptance. Huawei may change the information at any time without notice.

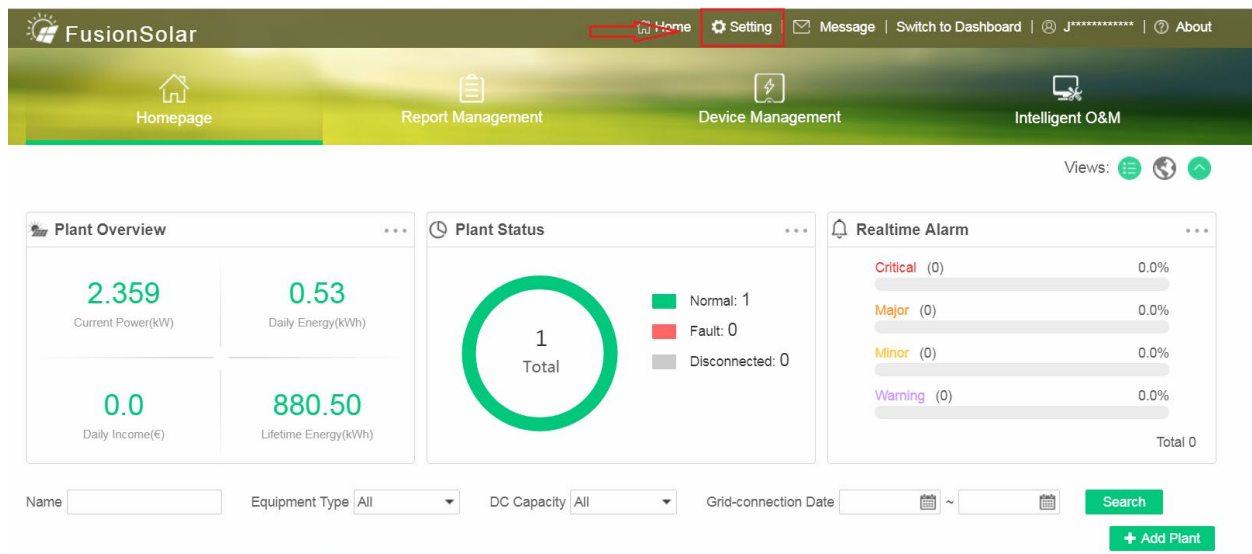
This document describes how to export logs and save the exported logs locally. The current login user installer has the permission to export logs.

Context

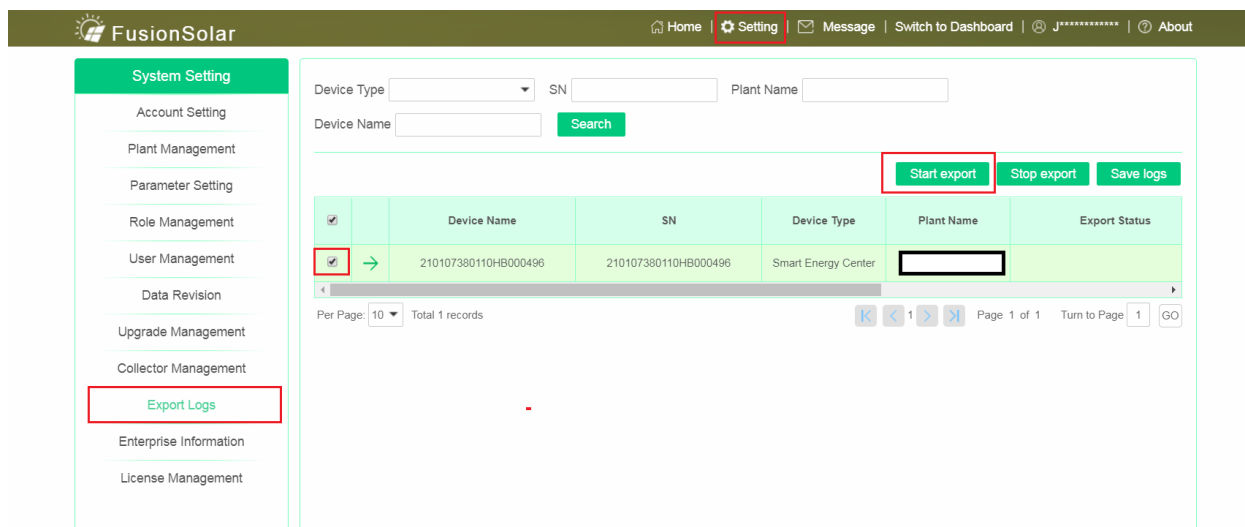
- Log export: the logs of the equipment will be exported to the Web server. Log saving: the logs in the server will be saved to the local computer.
- Log export is available for the Smartlogger1000&2000, Pinnet Smartlogger, Smart Energy Center, String Inverter, Battery, Optimizer, Safety Box, Smart Dongle and Smartlogger1000A.
- Log export cannot be performed simultaneously with the supplementary data acquisition and equipment upgrade.

Procedure

1. On the system homepage, click **Settings** to go to the **System Setting** interface.



2. Click **Export Logs** in the navigation bar on the left. The list of all equipment logs will be displayed in the interface.
3. **Optional:** set the query conditions and click **Search**. The equipment logs conforming to the query conditions will be displayed in the interface.



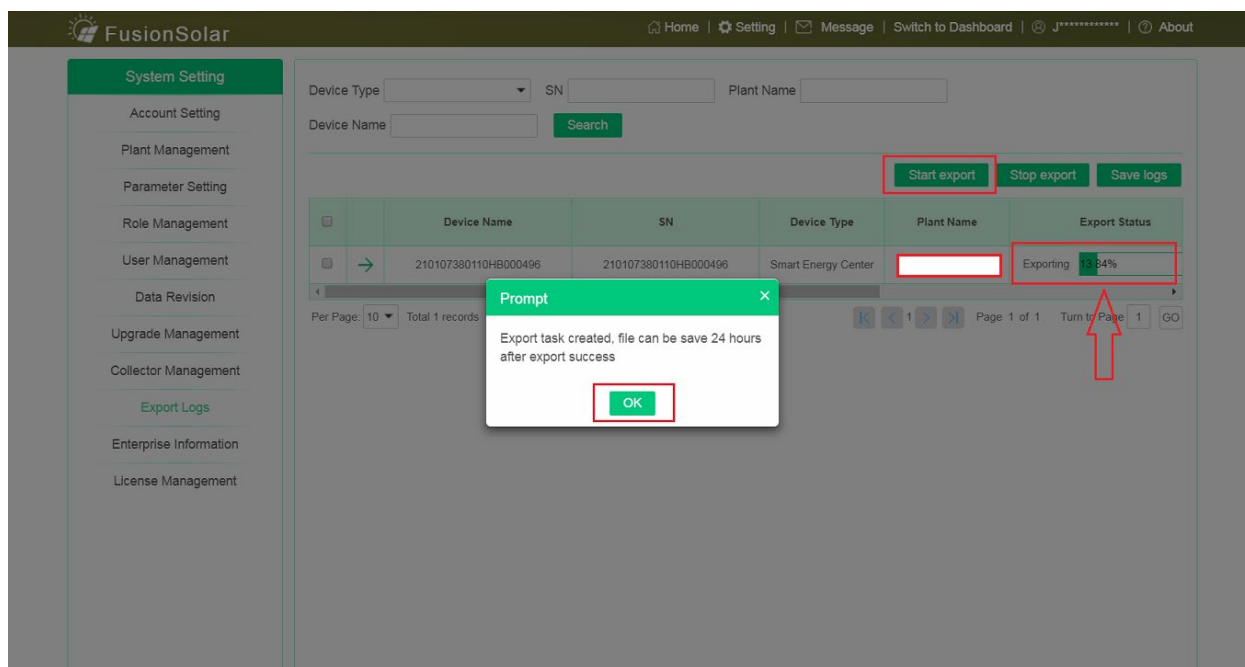
Device Type SN Plant Name

Device Name

	Device Name	SN	Device Type	Plant Name	Export Status
<input checked="" type="checkbox"/>	210107380110HB000496	210107380110HB000496	Smart Energy Center		

Per Page: 10 Total 1 records Page 1 of 1 Turn to Page 1 GO

- In the log list, select the device(s) with logs to be exported and click **Start export**.
- Click **OK** in the pop-up prompt dialog box. After the export task is created, start to export logs.



Device Type SN Plant Name

Device Name

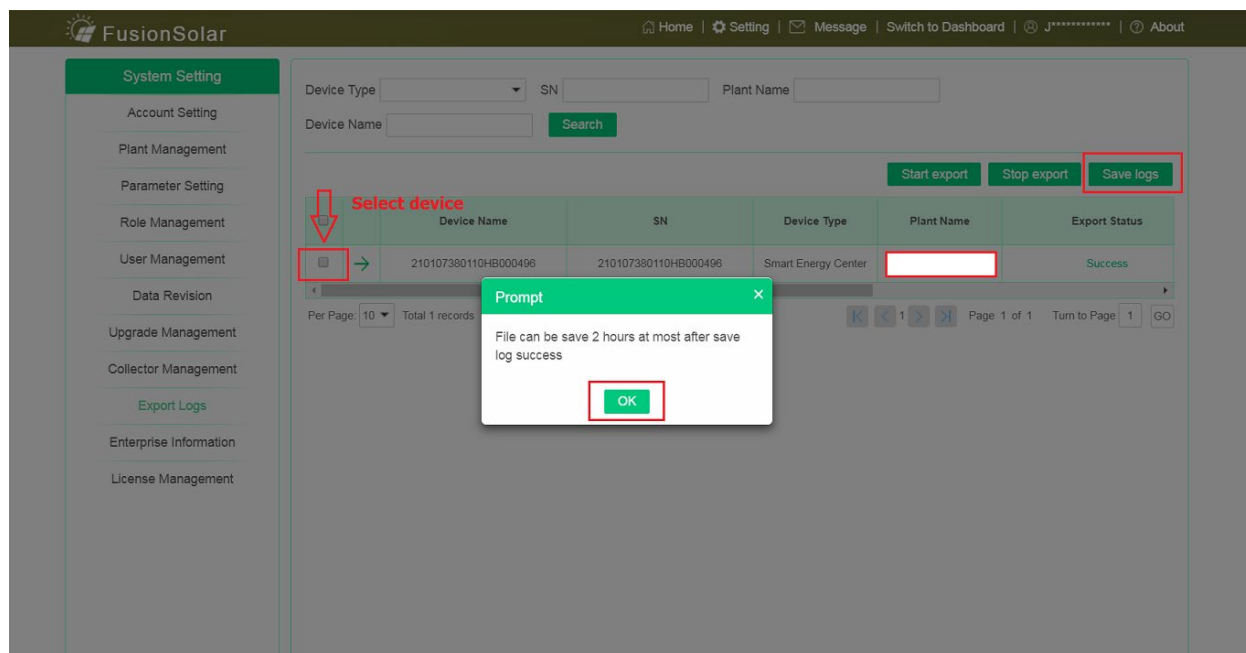
	Device Name	SN	Device Type	Plant Name	Export Status
<input checked="" type="checkbox"/>	210107380110HB000496	210107380110HB000496	Smart Energy Center		Exporting 33.84%

Per Page: 10 Total 1 records Page 1 of 1 Turn to Page 1 GO

Prompt

Export task created, file can be save 24 hours after export success

6. After the log export is completed, select the device with logs to be saved, click **Save logs** and the **Prompt** dialog box is displayed.
7. Click **OK** to export the logs and the logs will be automatically saved in your computer.



NOTE:

- After the log is successfully exported, the Web server will automatically delete the log after 24 hours if it is not saved.
- After the log is successfully saved, the Web server will automatically delete the log after saving it for up to 2 hours.