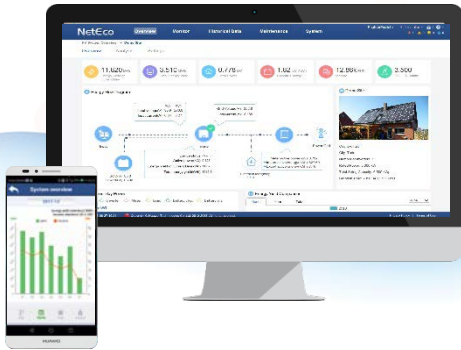


FusionHome-NetEco 1000S



Smart

- Easy data access on mobile devices
- Proactive reports of yields and alarms

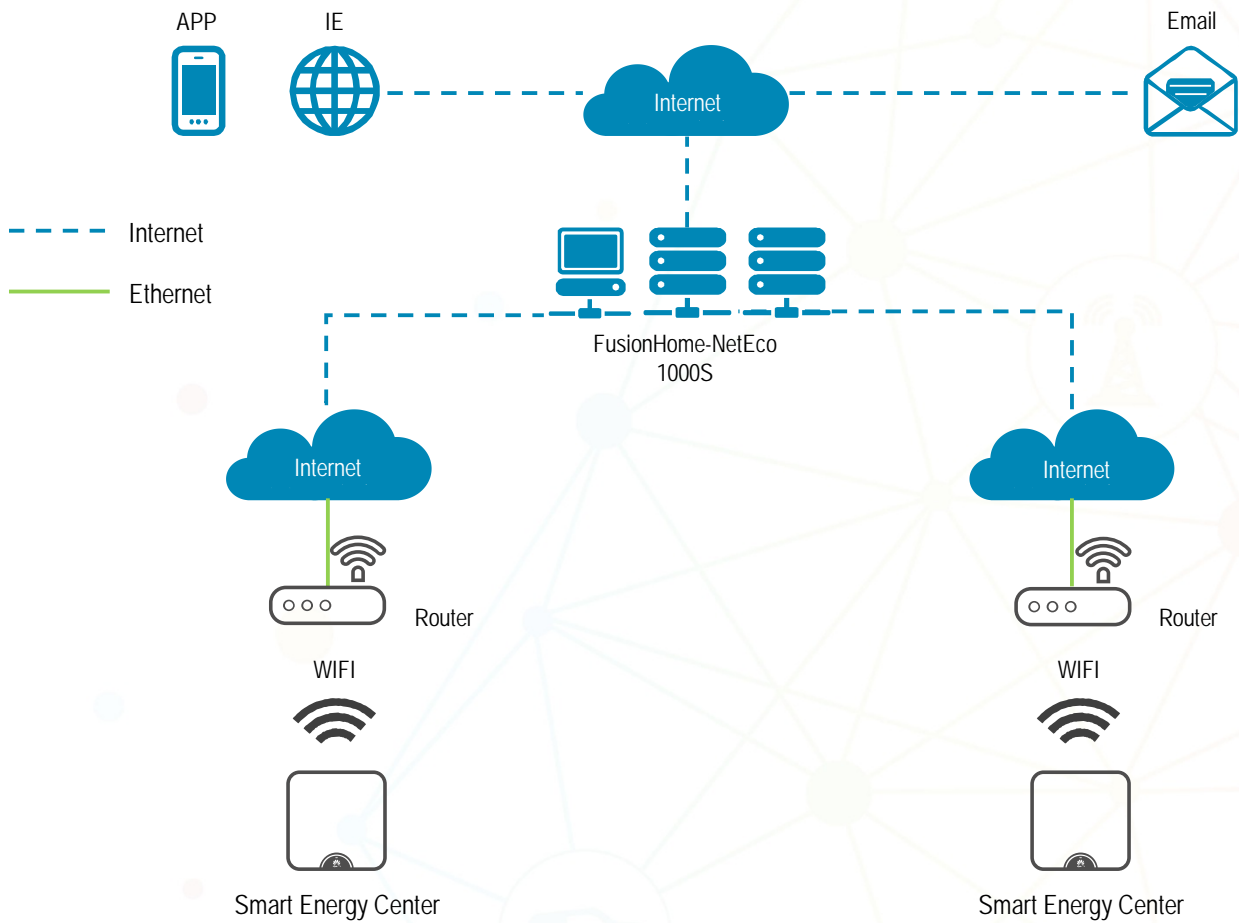
Simple

- Easy & simple to get started
- Fault alarms via E-mail

Stable

- Centralized management on all PV systems
- Up to 20 years data storage

Network Structure



Function	Submenu	Description
Monitor	Details	<ul style="list-style-type: none"> Browse detailed and real-time device information, including alarms, key performance indicators and device status. Support remote inverter on & off control.
	Alarm	<ul style="list-style-type: none"> Collect, store, browse current alarms.
	Device List / Plant List	<ul style="list-style-type: none"> Show device / plant information and real-time status.
	Setting	<ul style="list-style-type: none"> Set device parameters, like device information, time zone, communication parameter, etc.
Historical Data	Alarm Log	<ul style="list-style-type: none"> History alarms can be inquired according to the time and severity.
	Performance Data	<ul style="list-style-type: none"> Query plant and device daily / monthly / yearly power.
Maintenance	Device Maintenance	<ul style="list-style-type: none"> Browse the device operation log. Support device inspection & management. Support batch modification on device name.
System	User Management	<ul style="list-style-type: none"> According to different users, FusionHome-NetEco provides different log on authorities. Create users.
	Remote Notifications of Alarms and Reports	<ul style="list-style-type: none"> Through settings on the server and sending rules, the alarms and yield reports can be sent to user's email automatically.